

masonry consolidation



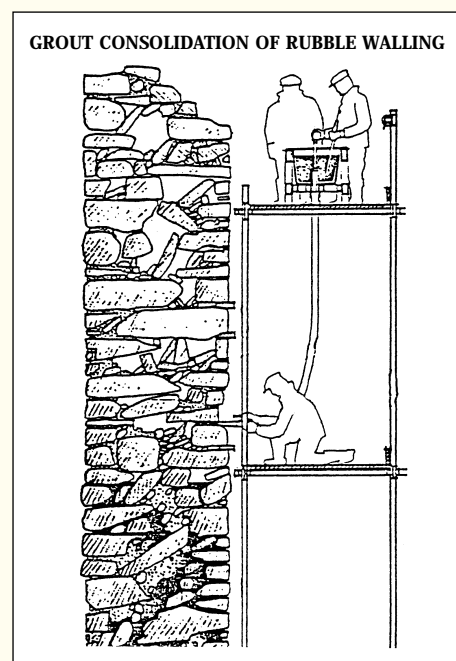
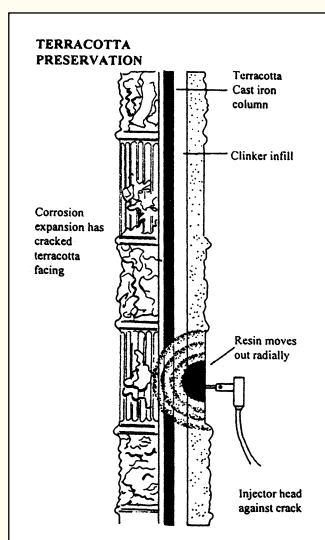
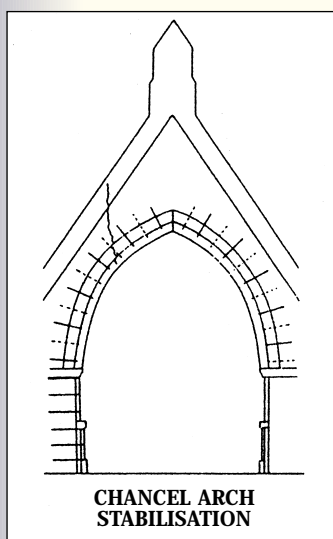
Metropolitan Stone can offer a variety of masonry consolidation techniques to suit every type of failure in brick, stone or rubble construction.

Cementitious and pozzolanic grouts are used to fill the voids and strengthen old masonry walls, sometimes incorporating stainless steel tie bars for added strength.

Loose and friable brickwork can be strengthened by the application of penetrating resin sealers and brick cracks repaired by resin injection.

Voids within the clinker concrete fill behind terracotta or faience can be filled by resin injection and the supporting steel or ironwork can be effectively encapsulated to prevent further corrosion and provide a long lasting repair with the minimum of disturbance.

Careful choice of grout type, reinforcement and methods of introducing it into a failed structure are our specialities and we can often turn weak or failed masonry into strong load-bearing material with minimal disruption.



Stone Cleaning • Restoration • Marble Maintenance • Concrete Repair

Supply & Fixing of Natural & Pre-Cast Stone

Supply & Fixing of Marble/Granite/Terrazzo

Repairs to Cornices, Soffits & Ashlar Stone

5 WELLS PLACE
REDHILL
SURREY RH1 3DR

TEL: 01737 644111
FAX: 01737 648300

E-Mail: info@metropolitanstone.co.uk
www.metropolitanstone.co.uk



Certification number 1450/97